

sustainable

WATERLOO ► REGION

2021 report



flux growth evolution

for a better tomorrow

In recent years, the understanding of the role of turmoil, disturbance and flux in the growth capacity of the natural world has challenged the human conception of nature being in balance. Many scientists have now postured that natural systems are inherently in a constant state of change and that is how growth and evolution occurs. Human beings are not separate from nature and so this is also true for us in how we learn, grow, and evolve.

There has been no other time in recent history that has created more flux around the globe than the past two years. The global pandemic has thrust us into a state where we are changing so much of how we live, work, and relate to each other, that the weaknesses in our community structures have risen to the top and the need for action in so many areas is ever more apparent. Climate change is no exception.

If we have had the honour of being in virtual meetings together in the past few years, the topic of intersectionality has likely been discussed. The climate crisis is a human existential threat, but it is not independent of the other social issues that are now very real, including equity, diversity and inclusion; truth and reconciliation; gender issues; poverty; and many more. This is so perfectly articulated in the United Nations Sustainable Development Goals (UN SDGs) and specifically the 17th goal which states: “that we cannot solve one issue without addressing all the others.” We at SWR strive to embody this. While our expertise is in environmental sustainability with a focus on climate change mitigation, we deeply believe that our work in this area is a work of human justice, and have been striving to deeply embed this in all that we do.

In 2021 we saw the impacts of this state of flux that we are all living through manifest itself in the work at SWR. This has included the first steps to operationalize our strategic plan to develop and launch programs and projects that work to transform our region, not just to make incremental change. Projects such as the planting of the first Microforests,

the development of a local Clean Economy Sector Map, the expansion into our neighbouring communities, the adoption of our community Climate Action strategy TransformWR, and incredible growth in our programs.

The turmoil of the global pandemic has not only woke us up to the issues we face as a society, it also has made us aware of how much we can change when we really understand the need to. It has also created a clearer understanding of this interconnectedness of the issues we are facing and the possibility of community action towards a better, long-term future for all.

We hope that in reviewing this report you will see just a few examples of the things that Waterloo region organizations and communities have done in 2021 to move us forward and invest in this better future. The team at SWR is honoured to be here, supporting this movement, working with our community and partners, and sharing the vision of a more sustainable Waterloo Region for all.

Tova Davidson
Executive Director

Barry Colbert Ph.D.
Board Chair

committed in 2021

77,065
TONNES OF CO₂e

21,899
THE EQUIVALENT OF
CARS OFF THE ROAD (TO DATE)

8,730
m³ OF WATER

swr awards

These awards are given to those who have gone above and beyond in their efforts to support a more sustainable community. These recipients have provided outstanding support to Sustainable Waterloo Region, our programs, projects, and people.

SWR Champion of the Year

Bruce Taylor, Enviro-stewards



A single person who has been highly involved and supportive of sustainability with SWR and in their organization in 2021. Not specific to any one program and preferably to multiple programs/projects.

Bruce has been a forward thinking and engaged member since joining SWR and the Impact Network. Bruce has been an advocate for sustainability by implementing numerous strategies within his own organization, such as the installation of a new blue roof! He has been extremely keen and engaged within the Impact Network such as hosting the “Pathway to Net Zero” event. The level of skill and expertise that Bruce provides to SWR, his clients and the community is unparalleled.

We would like to thank Bruce for his forward thinking in the space of sustainability, creating constructive and equitable change for residents and clients.

Partner of the Year

Studio Locale

Studio Locale

An organization that went above and beyond in their support and participation in 2021. This organization is a key partner to SWR in the work we have done in one or many programs/projects.

Studio Locale has been a partner with SWR for 5 years now. Their dedication to graphic design and sustainability is unparalleled within our community. Their support and work with developing the Year-end Report for a multitude of years allows SWR to be as great as it can be. Without them we wouldn’t be able to communicate our information in an interesting way!

The partnership is stronger than ever, and there is no other organization that we would rather work with in achieving a sustainable future.

Best Partnership

Sector Map Partners (Region of Waterloo, Waterloo Community Energy, Waterloo EDC)



This award recognizes the instrumental efforts of partnership between members of Sustainable Waterloo Region.

In 2021 the first Waterloo Region Clean Economy Ecosystem map was created. This would not have been possible without each of the partners in this great initiative. The map is both a celebration of the capacity that exists in our region for a strong clean economy, and also as a tool for demonstrating the growth potential for a prosperous future. Our thanks to each organization for their support and efforts throughout the process!

The awards this year are art done by Morningstar Designs. Winners will be surprised with one of three different artworks.

Alanah Astehtsi Otsistohkwa (Morningstar) Jewell (she/her) is a mixed French-First Nations artist. She is Bear Clan from Oneida Nation of the Thames, grew up off-reserve and currently lives in Kitchener, Ontario. Alanah is an illustrator, painter and muralist, and organizes local Indigenous Art Markets through @IAMKitchener on Instagram.

Sustainability Breakthrough

Microforest Partners (AGES Foundation, City of Cambridge, EY, Energy+, Grand River Conservation Authority, Greenway Chaplin, Waterloo Region District School Board)



This award recognizes an organization that has overcome substantial barriers in their path to sustainability.

The microforest pilot project could not have been seen through with such success if it weren’t for the efforts of each partner in this collaboration. Throughout the project the energy was high and each barrier that we faced was met by a partner maximizing their resources to ensure a strong outcome. Congratulations to each of the partners on this project for such a successful pilot!

Sustainable Commuting

City of Kitchener



This award recognizes the member who has implemented sustainable commuting within their organization.

On December 14, 2020 Kitchener City Council approved the downtown cycling grid, connecting the downtown core to adjacent neighbourhoods and regional cycling arteries. Public consultation showed a strong desire for better-connected cycling options downtown and for more people-friendly transportation options. On October 27, 2021 the City of Kitchener completed and launched the initial phase (on Joseph Street) of the Downtown Kitchener Cycling Grid.

By making it safer to bike in Downtown Kitchener, the City has enabled people to have a sustainable and safe commuting option. They are taking the lead in transforming the way people move around downtown, paving a path to more trips taken using active transportation.

Rookie of the Year

Conrad Grebel University College



This award recognizes the most active and accomplished new member of the Regional Sustainability Initiative.

Conrad Grebel has been an incredibly forward thinking and ambitious member since joining us in 2021! They have taken the steps to understand their impacts, worked on identifying key projects to reduce them, and are now working towards finalizing their first greenhouse gas reduction target! They quickly formed their Green Team and ensured there was a great mix of voices, to ensure diverse approaches to develop sustainability goals and initiatives. Their continued dedication to student involvement, and desire to make a difference in their community has been incredibly inspiring to be part of, and we are beyond excited to see what is in store for them in the years to come.

how we transform

ClimateActionWR is a collaboration between local organizations, community members, and municipalities in Waterloo region, focused on climate change mitigation, led by Reep Green Solutions and Sustainable Waterloo Region. It coordinates the activities of our community's climate action plans with a current greenhouse gas (GHG) emission reduction target of **80%** by 2050.

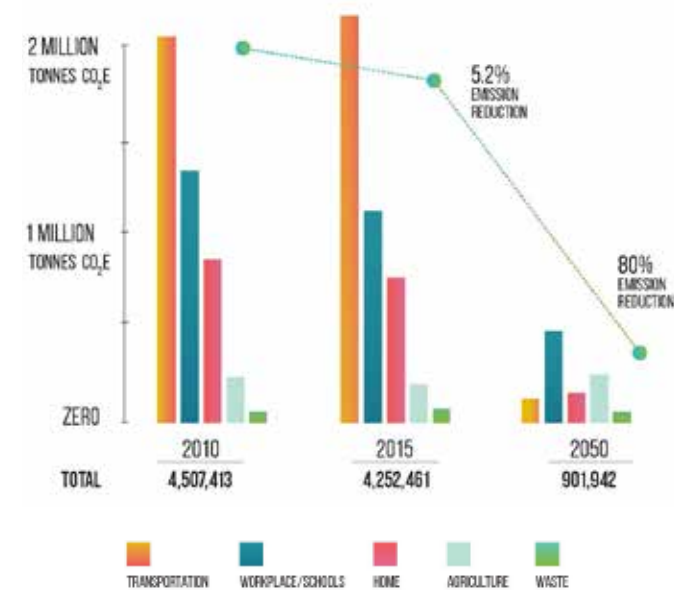
transformWR launch

In June 2021, the ClimateActionWR collaborative brought the TransformWR long term strategy and short term plan to all eight area municipal councils: City of Cambridge, City of Kitchener, City of Waterloo, Township of North Dumfries, Township of Wellesley, Township of Wilmot, Township of Woolwich, and The Region of Waterloo. The TransformWR strategy outlines our community's pathway to an **80% greenhouse gas emission (GHG) reduction by 2050**, and identifies local actions that can be taken in **Waterloo region to reduce emissions 30% by 2030**, our short-term '30by30' interim target. The TransformWR strategy was developed to be the guiding document that outlines the work that needs to be done by all members of our community, including municipal governments, businesses, community organizations, and residents of Waterloo Region. It identifies and outlines six transformative changes that will help us build an equitable, prosperous, and resilient low carbon community by 2050 by reducing vehicle travel, switching to zero emission vehicles, transitioning businesses and homes off fossil fuels, shifting toward a circular economy, and growing our local food system.

In addition to endorsing the TransformWR strategy, all Councils passed an **additional interim absolute community GHG emissions reduction target of 50% by 2030**. The TransformWR strategy outlines the steps to **achieve a 30% local community GHG reduction by 2030** through a list of 78 action items in the TransformWR 10-year plan. With support from Provincial and Federal levels of government to reduce emissions outside our local control, and through actions that multiply the impact of our local actions (such as decarbonizing Ontario's electricity grid), this will put us on track to meet our community's interim **target of a 50% GHG reduction by 2030**.

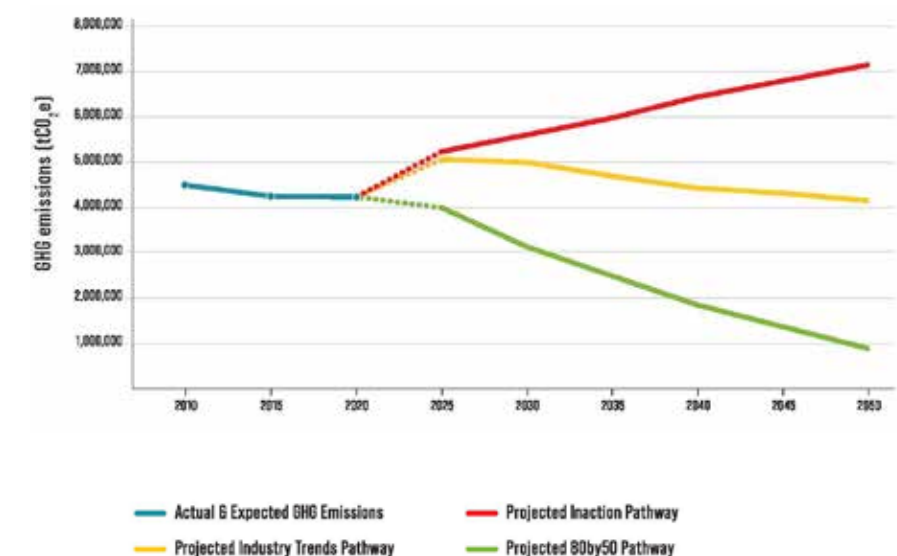
The first step towards our long term goal is achieving our short-term **target of a 6% reduction (based on 2010 baseline levels) by 2020**. Our GHG re-inventory process is currently underway, and results will be available by the end of 2022. At that time, we will learn Waterloo Region's progress and how we can continue forward towards our 80% target by 2050.

Reduction in emissions by sector



Results of Waterloo region's 2010 and 2015 GHG inventories show a local GHG reduction of 5.2%. To achieve our long-term 80% reduction target, significant collaborative efforts will need to be made over the next 30 years.

Waterloo Region GHG inventory pathways



Actual and expected Waterloo Region total GHG inventories meeting the 3 projected pathways: inaction, industry trends and out '80by50' pathway with an interim 30% GHG reduction by 2030.

microforests

This fall we planted our first microforests as part of our work in developing a low carbon economy...



and engaging even more organizations on local climate action. Microforests are a small area of non-developable land (>500 sq ft.) that is returned to a natural state through the planting of native trees and shrubs. It is a great way to naturalize small plots of land in urban areas, and they bring many ecological and social benefits; including the sequestration of carbon, nutrient cycling and increased tree canopy that provides shade and temperature benefits.

Our first microforests were planted at Manchester & Avenue Road Public Schools, with the support and effort of our partners at the Ages Foundation; City of Cambridge; Grand River Conservation Authority; Greenway Chaplin Community Centre; and Waterloo Region District School Board. The sites were planted by employee volunteers at Energy+ and EY Waterloo.

Reflecting on the pilot, it was so wonderful to see so many organizations come together and take action. We know that naturalization has a positive impact on well-being and this project presents a great opportunity to invest in our communities with strong environmental co-benefits.

SWR will be continuing this initiative, with the goal of planting 10,000 trees over the next 5 years. We'd like to start with the planting of 10 more microforests in the fall of 2022 at businesses, schools and organizations across the region.

If you'd like to get involved, please consider donating land to plant on, sponsoring or adopting a forest.

how we grow

program developments

2021 was an exciting year for new program development at SWR! With a new strategic plan, focused on transformative change in energy, mobility and buildings, we undertook a multi-faceted consultation approach to narrow down a list of 16 ideas to three priority projects. From the 16 ideas submitted by the community, our trusty Board of Directors narrowed it down to five. In April we consulted members of the community to vote on the transformational projects that we should pursue next. The initiatives with the most votes were:

- 1 A local **Green Building Network** that would support the local building industry in developing a strong sustainability culture that meets the needs of changing market demand and anticipated changes to building code in response to necessary climate action.
- 2 A **retrofit aggregation program** for the industrial, commercial and institutional (ICI) sector, where SWR could enable faster adoption of deep retrofits by aggregating projects, providing human resources capacity, and technical knowledge to support a quicker transformation to lower emission buildings
- 3 The development of **Waterloo Region as a hydrogen hub** that supplies hydrogen to local industry and the long-haul, heavy-load transportation sector.

Throughout July we continued to consult sectoral experts to continue developing our understanding of these ideas and how SWR will take action.

We are excited to continue our work on these projects and bring them to life. They each present great opportunities for significant **GHG reductions** and potential **transformations in our local energy systems** and new and existing building stock.

Community Sustainability Lab

The Community Sustainability Lab is a forum for community members to raise systemic sustainability challenges, where the diverse knowledge base from the innovative businesses, nonprofits and higher education institutions locally will be leveraged to mobilize and collaborate in ideating on solving selected issues. Innovative solution ideas will be matched to organizations with the best implementation capacity, depending on whether they are a policy intervention, commercialization potential, or a research opportunity.

The Community Sustainability Lab is a collaborative program developed and supported by Sustainable Waterloo Region, Accelerator Centre, VERIS at Wilfrid Laurier University and the Interdisciplinary Centre on Climate Change (IC3) at the University of Waterloo, under the evolGREEN partnership. As a group we are committed to a thriving clean economy in Waterloo Region and broadly in Canada.

We are currently seeking sponsors to help us make this vision a reality. We anticipate the launch of the lab in 2022. We look forward to hearing from the community on the sustainability issues that matter to you most and how we can mobilize to solve them together.



Impact Network

The Impact Network (formerly known as Regional Sustainability Initiative) works with local organizations across Waterloo Region to help support the integration of sustainability into the core of organizations. With a large varying membership base, each approach is different and tailored to your specific needs.

Our milestone process offers a guided experience on the steps to help inspire action and support transformation. Through our Milestone process we are also able to incorporate the United Nations Sustainable Development Goals (UN SDGs) into our framework. This allows members to align their goals with the SDG's and attain a sustainable, low-carbon future. We support members in understanding their impacts, and work with them to set voluntary targets related to greenhouse gas emissions, waste and water impacts, and helping to increase waste diversion.

70%

of members implemented projects last year to increase sustainability

67%

of survey members have an active Green Team

22%

of surveyed members reported a decrease in work from home since 2020. This is still an increase since pre-pandemic, and those members with high work from home rates have a marked decrease in emissions from commuting

It pays to be sustainable! Two thirds of members who tracked this found that their sustainability projects had a positive financial impact.

increase in membership

During 2021, we saw many organizations across Waterloo Region take the steps to **commit to sustainability**. In 2021, we welcomed **12** new members, with a **net 7** increase in our membership base – what an incredible commitment from our local community! We welcomed Activa, Balsillie School of International Affairs, Bavarian Windows, Building Knowledge Canada, CHANGE Lifestyle & Apparel, Conrad Grebel, Henry Walser Funeral Home, HIP Developments, IMS, MEDA, Pfenning's Organic Farm and Pretium Engineering. Thank you all for your commitment to a sustainable future! We are thrilled to have you all as part of our network and working towards an equitable, prosperous, resilient low carbon future!



carbon cleanse 2021

The 7th Annual Carbon Cleanse was completely remote, with employees of member organizations completing challenges from home; often with friends, family and pets alongside! Four weeks of challenges focused on improving sustainability awareness in five themes: Culture of Sustainability, Commuting, Energy, Water, and Waste.



Impact Network

Low Impact meals

Employees learned that eating less meat can cut their water footprint dramatically. Participants cooked up a total of 41 meatless meals! MTE Consultants even created a collaborative “MTEats” uncooked/raw meals recipe book.



Water Week

Water Week saw the most engagement. 23 employees gave up paper towel usage a week! It was amazing to see the reusable alternatives used, conserving trees and reducing water pollution.

Energy Week

During Energy week, EY and Quarry employees both dimmed the lights for Earth Hour. AET and Quarry employees turned down their thermostat and wore ugly/ warm sweaters.

Travel Week

Competition stepped up for commuting week. Diva International implemented walking meetings, and 2 employees walked 150,000 steps in 2 weeks! The GSP team cycled a cumulative 150 km in one week, exceeding their target of riding the 66 km distance between their Kitchener and Hamilton offices!

We are so proud of what members accomplished, and of our winners of 2021 Carbon Cleanse:

1st place: MTE Consultants



2nd place: Diva International



3rd place: AET Group Inc.



pledging members 2021

member progress

Our GHG Pledging Partners commit to reducing their environmental impact by setting either absolute or intensity-based reduction targets:

Absolute targets aim to reduce an organization's total emissions or water impacted by a targeted amount.

Intensity-based targets aim to reduce emissions or water impacted relative to a particular organization's growth factor or performance indicator. Intensity metric values could include reductions per: square metres of office space , full-time employees, or products produced.

how to read the graphs

Gold, silver or bronze refer to the reduction target level.

Pledging members have set **GHG**, **waste**, and/or **water reduction targets** and report annually on their achievements in sustainability.

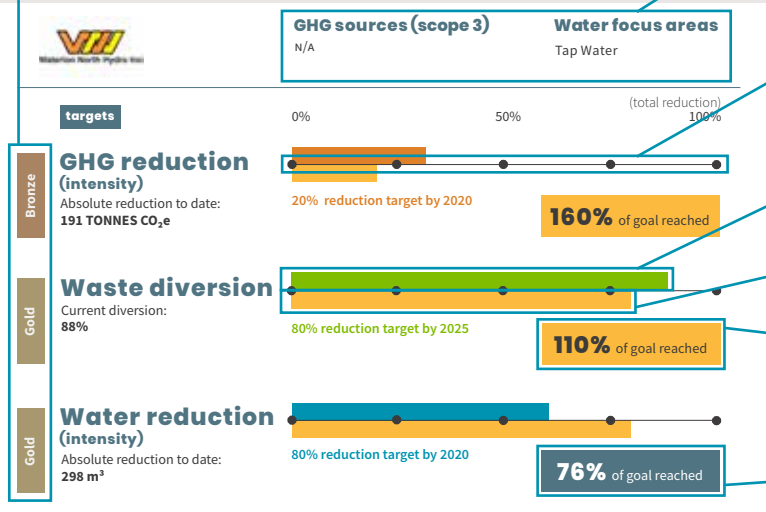
This line represents the **total amount** of GHG's, waste, or water used by the member.

The top bar (orange, green or blue) shows what percentage of the members goal has been reached.

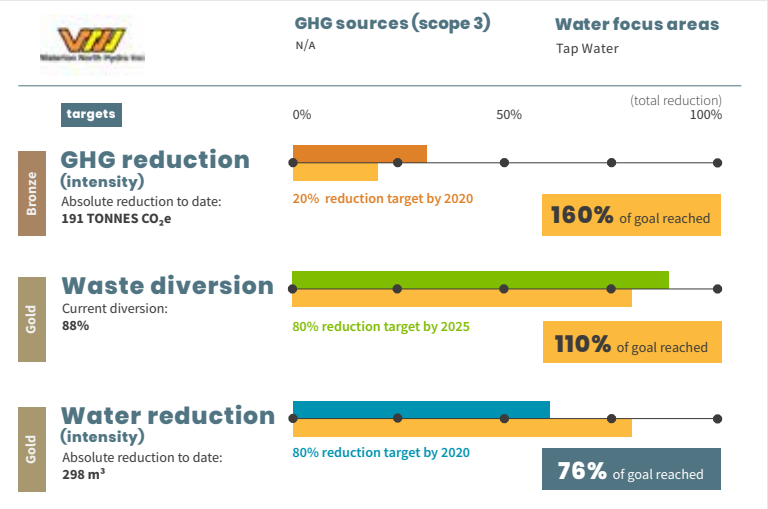
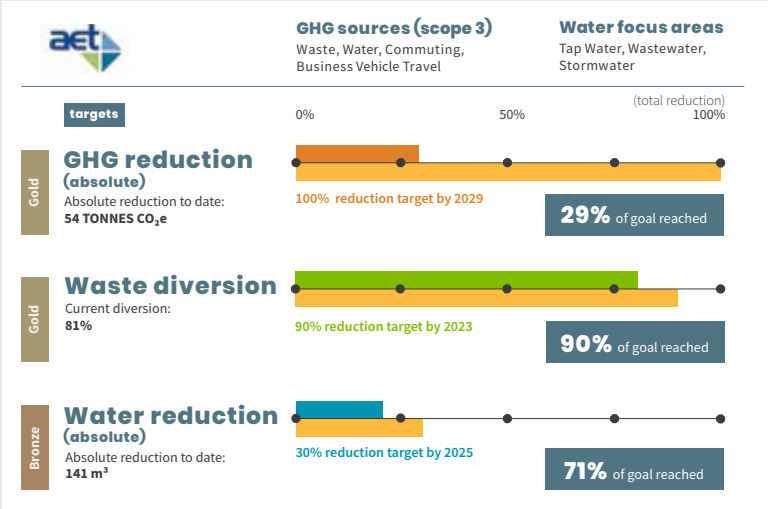
The bottom gold bar shows what percentage of reduction/diversion that the member has set as their goal.

A gold banner means that the member has met their goal.

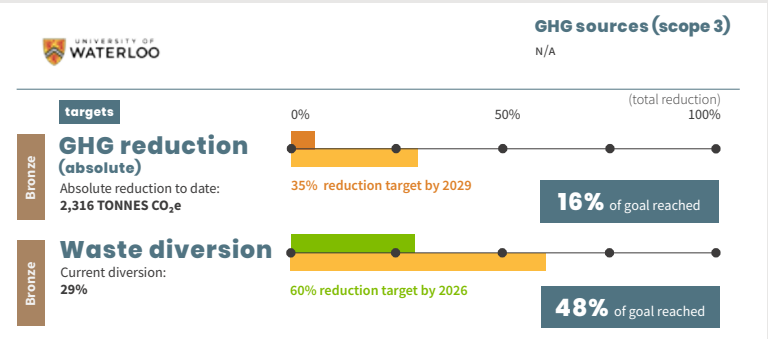
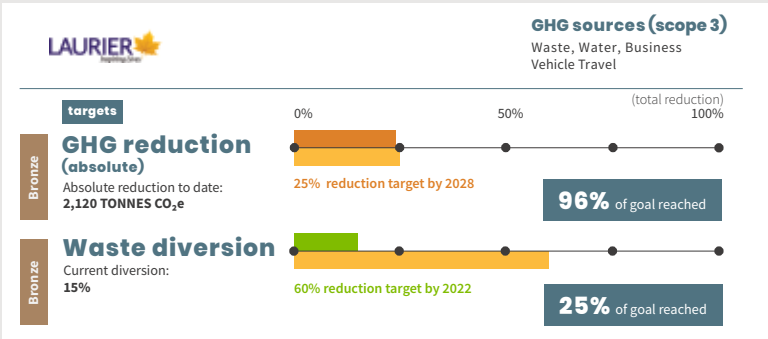
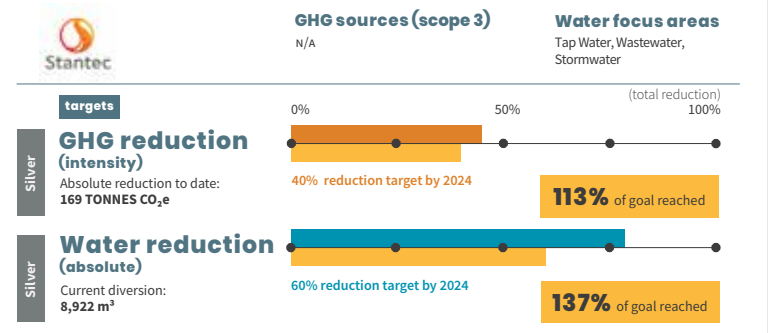
A blue banner means they are still working towards their goal.

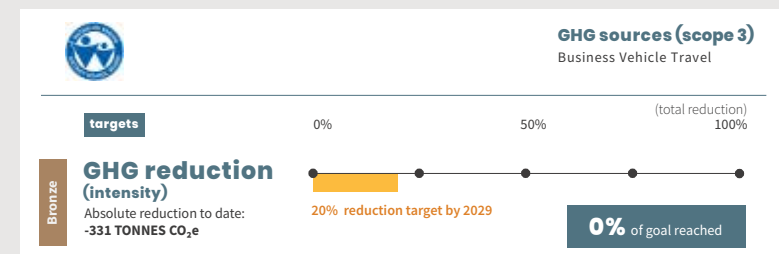
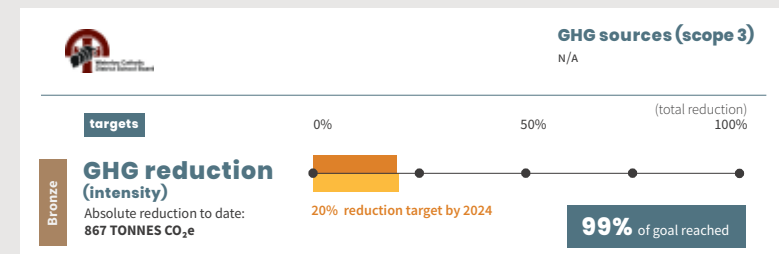
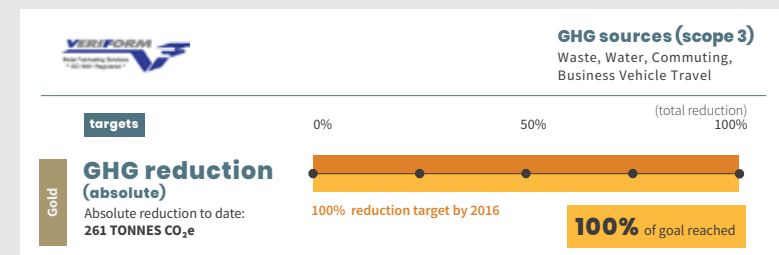
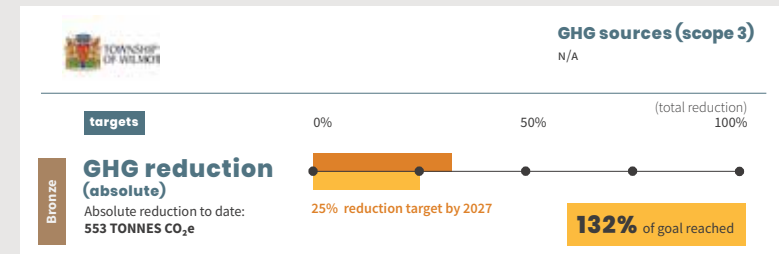
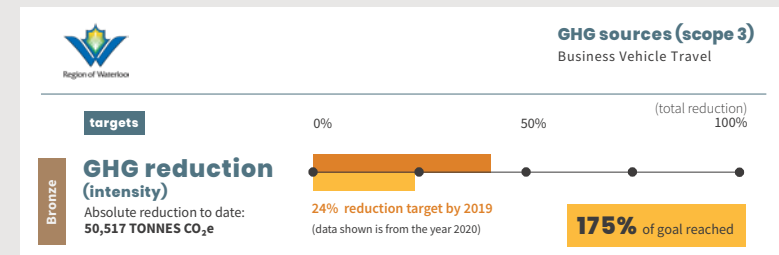
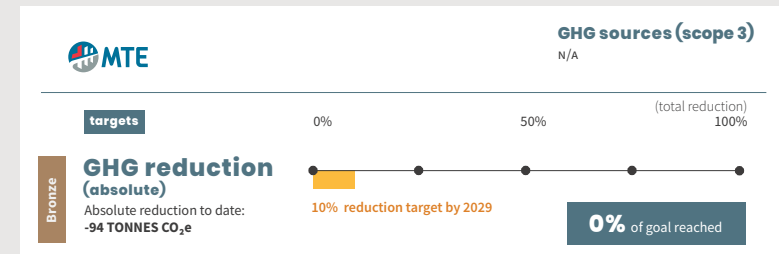


three target members



two target members





member recognition



New Target Update

AET has set a **100% absolute greenhouse gas reduction target** by 2030. This represents one of the most ambitious targets ever set within the program! They have chosen to include optional Scope 3 emissions sources in this target, like water, waste and all business-related travel. AET is also working towards a goal of **90% Waste Diversion** and **30% Water Impact Reduction**. AET continues to showcase that sustainability and climate action is deeply ingrained in their business.



Updated Member Goals

We're excited to celebrate EY's new sustainability goal commitments! EY has set their sights for achieving net zero emissions by 2025 in Waterloo Region, and globally, have reached carbon negative status. To tie into their net zero goal, they will also be exploring opportunities to track and monitor employee commute data to measure that impact. Targeting the new world of at-home and in-office working, they have also set a goal to improve waste reduction and recycling efficiencies in the office and for employees working from home. Rounding off the new goals, EY will be getting involved with their community by committing to 200 hours in 2021 and increasing their commitment over the next year to help with local sustainability projects and events.



Blue Roof Installation

In 2021, Enviro-Stewards took their commitment to sustainability to new heights! The first Affordable Smart Blue Roof (ASBR) was installed on the roof of Enviro-Stewards' head office in Elmira in June 2021. This new form of green infrastructure helps to collect storm water through a pond system that temporarily stores and gradually releases the water, offering a way to conserve water and prevent water related damage. This new installation helps to keep the building cooler during warm weather, water is also treated and stored in a tank for water reuse in the toilets. The ASBR project highlights Enviro-Stewards' holistic approach to cost-effective and practical solutions to environmental challenges.

These Are Just A Few Of The Stories That Showcase Our Members And Their Tremendous Efforts Towards Sustainability. To Read More Stories, Please Refer To The Member Recognition Section Of The Year-End Report On [Sustainablewaterlooregion.ca](https://sustainablewaterlooregion.ca)



UN SDG progress tracking

The Sustainable Development Goals Action Manager is a tool to help measure the impact of businesses around the world, and allows them to take meaningful actions and track their progress working to implement the SDGs. This brings the B Lab B Impact Assessment, the Ten Principles of the United Nations Global Compact and the Sustainable Development Goals all together into one assessment tool.

There are 17 interconnected goals, which are a blueprint for bettering people and the planet by 2030. The core modules for the Impact Network are SDG 6, 7, 11, 12 & 13, which align best with the program milestones, but Members are welcomed and encouraged to complete the other 12 modules as well to gain a better understanding of their organizations' impacts.

Members who are working to compare and improve their organizations against the SDGs:

Member

Completed Modules

sdg reporting members

1 Milestone
Onboarding



2 Capacity building



3 Reporting



4 Target Setting & Attainment

	Gold	Silver	Bronze
greenhouse gas	  	       	              
waste	   		 
water			
other targets	  		

how we connect

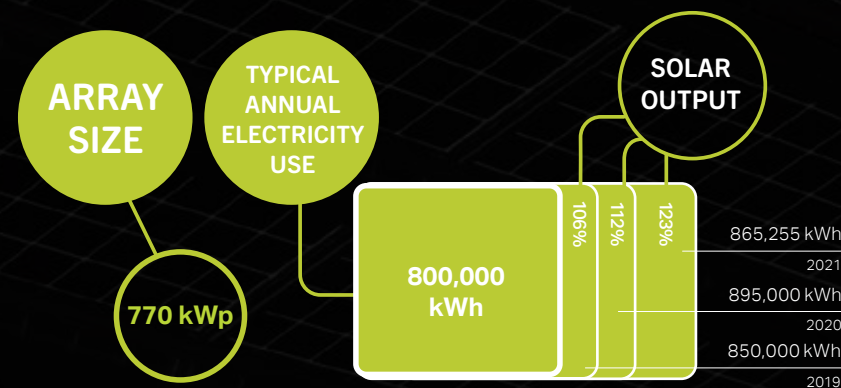
Culture of Sustainability

This program began as a research project to collect data regarding creating a culture of sustainability within office buildings. The evol1 building acts as a 'living laboratory' to understand how to engage those who work in sustainable buildings in sustainable practices. The program is designed to nudge people towards sustainable habits via the physical building design and by encouraging social sustainability. The Culture of Sustainability program is designed for and by the evol1 community to connect tenants within

the building and to increase awareness, knowledge and commitment to environmental sustainability and impact reduction. Over the past year we have engaged tenants in the program through monthly meetings with tenant organizations, social media including the @Culture.of.Sustainability Instagram, blog posts on the Sustainable Waterloo Region website and the monthly COS Connection newsletter.

About evol1

evol1 is a green office building located in the David Johnston Research + Technology park in Waterloo, Ontario. The concept of evol1 was inspired by Sustainable Waterloo Region and is owned and developed by the Cora Group. evol1 is Canada's first net-positive energy commercial multi-tenant office building. The building prioritizes sustainability and clean energy production in its building design and operation. evol1 is meant to motivate, inspire and educate the public and sustainable workplace design.



Photovoice

The Photovoice Project is an **exhibition and research initiative** that explores the experiences of people who work in evol1. The work began from research completed by Wilfrid Laurier University and the VERIS Research Centre. The project applies an arts-based research method, Photovoice, to investigate the human factors in the evol1 green office building.

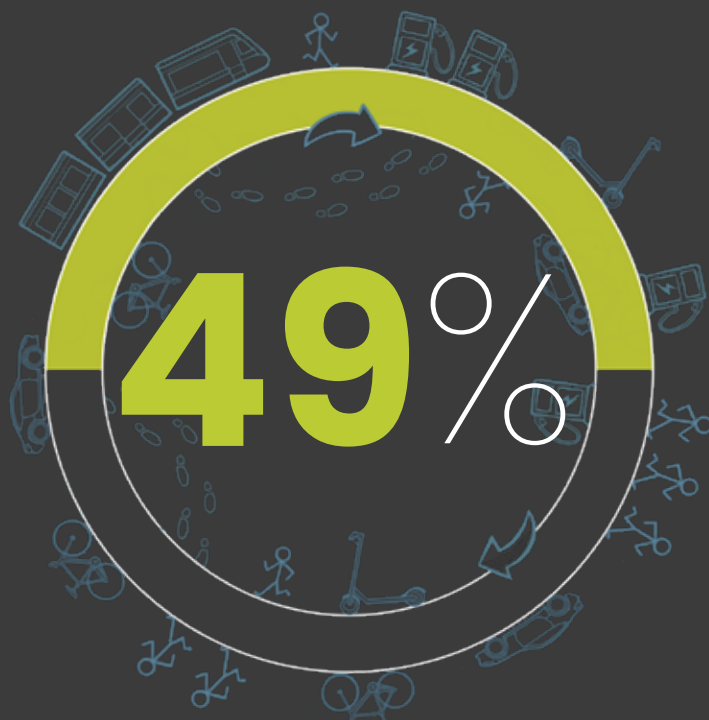
Participants explore how the high-performance green building they work in influences their behaviour and well-being. Human factors included how people interacted with their environment and how the building influenced their sustainable values and practices. Reflections focus on how to continue to build a culture of sustainability.

Taking photos of their environment, six participants from four different companies in the building reflect on their experiences, elements they enjoy and what could be improved upon in the evol1 building. Common themes and photos from discussion were selected for the exhibit which is installed in evol1 and was also featured at THEMUSEUM. Themes represent participant experiences and suggestions for the future of evol1 and similar buildings and workplaces that focus on **well-being and sustainability**.

how we move

travelwise

TravelWise is a program of the Region of Waterloo and is delivered in partnership with Sustainable Waterloo Region. TravelWise offers member organizations tools and services to help employees find innovative and sustainable transportation options that reduce the number of people driving alone on our roads.



Transportation accounts for almost half of greenhouse gas emissions (GHG) in the Waterloo Region.



Kitchener Downtown Cycling Grid

There's a new way to get around downtown. Kitchener's Downtown Cycling Grid encourages people of all ages and abilities to move safely and comfortably by bike. New separated bike lanes on Joseph Street and Water Street – with more to come! – create a trail-like experience in the heart of the downtown, so you can make the sustainable transportation choice. Give it a try, today!



University of Waterloo Secure Bike Shelter

member project initiatives

In 2021, TravelWise members have initiated and undertaken exciting sustainable transportation-related projects. From building a **bike shelter** and a **cycling grid** to installing more **EV charging stations**. Check-out some of the projects and if you have any questions or feedback, feel free to reach out via email: travelwise@regionofwaterloo.ca.

In 2021, University of Waterloo launched its bike shelter, a resource to provide more secure and covered bike parking on campus. Passionate students initiated the project, which can support 62 bikes. The shelter provides some protection from the elements and complements the campus' secure bike box program.



Charging Station Project

In 2021, Natural Resources Canada approved funding for Wilfrid Laurier University to expand electric vehicle (EV) charging infrastructure at the Waterloo campus as part of the Zero Emissions Infrastructure Program (ZEVIP). Laurier received \$25,000 to install five additional Level 2 EV charging stations, almost doubling the existing EV network. The EV expansion will be completed in two phases and will focus on under serviced areas of the Waterloo campus. Phase one was completed in 2021 with three stations installed in front of the Bricker Academic Building. The second phase will see two stations installed on the east side of campus at the 202 Regina Street Administration Building parking lot.



Market Trail

The Region of Waterloo, in collaboration with the City of Waterloo and Township of Woolwich, is wrapping up construction on a new multi-use trail connecting ION light rail to the St Jacobs Market District and beyond!

The Market Trail is a 1.5km paved multi-use trail from Northfield ION Station to Farmers Market Road. This unique "rail with trail" project follows a railway used primarily by Waterloo Central Railway for historic passenger train rides, and better connects local employers like the Waterloo Innovation Park to high frequency transit. The trail is fully lit and will be winter maintained – serving as a leading example of all ages, abilities, and all seasons of active transportation infrastructure.

The Market Trail connects people walking and cycling directly to St Jacobs Farm Market - supporting sustainable local tourism and access to local food.

The 21st century. A time where sustainability is of utmost importance and focus as climate change is rampant within all societies.

innovation within swr

Innovation is one of the words to describe SWR throughout 2021. Innovation allows for new opportunities and development both internally and externally. One of these opportunities would be the expansion of **SWR's reach to include regions beyond Waterloo Region**, such as Woodstock, Guelph, Stratford, Oxford! Sustainability is an important facet in the 21st century, it is now more important than ever to embed it within your organization. Expansion allows for further sustainability opportunities with the Impact Network, Travelwise, ChargeWR, Climate Action, and evolVGREEN.

The Impact Network has improved significantly over the past year with more and more members reaching out to SWR to join. The pandemic has definitely not slowed things down as companies are shifting their mindsets to becoming more sustainable and **enacting change through our programs and resources**. Speaking of resources,

the impact network has improved in regards to our Carbon Accounting software, opting for a much smoother experience for members.

SWR as a whole organization has undergone so many changes with each one improving on the last. There has been a large focus on Equity, Diversity, and Inclusion for our members joining our various programs. With our new Strategic Plan, SWR is able to maximize sustainability with new partnerships. The creation of the Clean Economy Sector Map allows for a streamlined approach to understanding sustainability on a more technical level. The bounds and leaps for innovation for SWR and the community are endless.

SWR is committed to keeping this momentum going, by onboarding new members, developing stronger connections both internally and externally, as well as providing new and exciting opportunities for our members.



sustainable
WATERLOO ▸ REGION

get involved

Join our network today and enjoy
the benefits of membership!

519-603-2223

info@sustainablewr.ca

www.sustainablewr.ca

Environmental Impact Statement

XXX copies of the 2021 Report were printed using
XXX kg of 100% post-consumer recycled paper. It was
also distributed digitally to reduce printed copies.

By using more sustainable paper we saved:

XXX kg of GHG emissions | XXXXX litres of water
XX kg of solid waste | XXX kilowatt hours



Ancient
Forest
Friendly™

FSC

Environmental impact estimates were made using the
Environmental Paper Network Paper Calculator [Version 3.2](#)